

GenaFlexstore®:

- *General information*
- *Advantages & Applications*
- *Execution & Materials*
- *Details:*
 - *Water supply*
 - *Over fill and pressure protection*
 - *Ventilation unit*
- *Installation*
- *Others*

Waterdichte oplossingen

Gena- Flexstore®

Waterdichte oplossingen

General information:

- Completely closed water storage system
- Intergration of liner with floating cover
- Use of high quality materials
- Material choice based on application (what will be stored?)
- Water supply: **Always** through the bottom
- Easy to install



Gena- Flexstore®

Waterdichte oplossingen

Advantages:

- *Optimal water quality: no contamination from outside (sand & leaves), no algae growth, lower change of infections.*
- *No flapping damage*
- *No evaporation*
- *Simple and fast installation without extra demands to foundation and tank.*
- *Uitermate geschikt voor opslag van: regen-; drain- en drinkwater*
- *Long life time due to use of durable materials*
- *Low maintenance*

Gena- Flexstore®

Waterdichte oplossingen

Applications:

- Water storage in tanks;
 - *Rain water and clean water*
 - *Drain water (recirculation water)*
 - *Drinking water (special material)*
- For existing and new tanks (Buwatec)
- Standard dimensions:

Benelux:

$3.5\text{m} \leq \emptyset \leq 26.5\text{m}$

Height: max. 5 plates $\leq 4.25\text{m}$.

Export:

$3.5\text{m} \leq \emptyset \leq 26.5\text{m}$

Height: max. 4 plates $\leq 3.50\text{m}$.

Gena- Flexstore®

Waterdichte oplossingen

- *Execution:*
 - **Always** prefab outlet
 - Installation equipment with cord and hooks
 - Waterproof zippers in cover for installation of outlets
 - Ventilation unit central in cover
 - Wall outlet for rainwater from cover



Gena- Flexstore®

Waterdichte oplossingen

Materials:

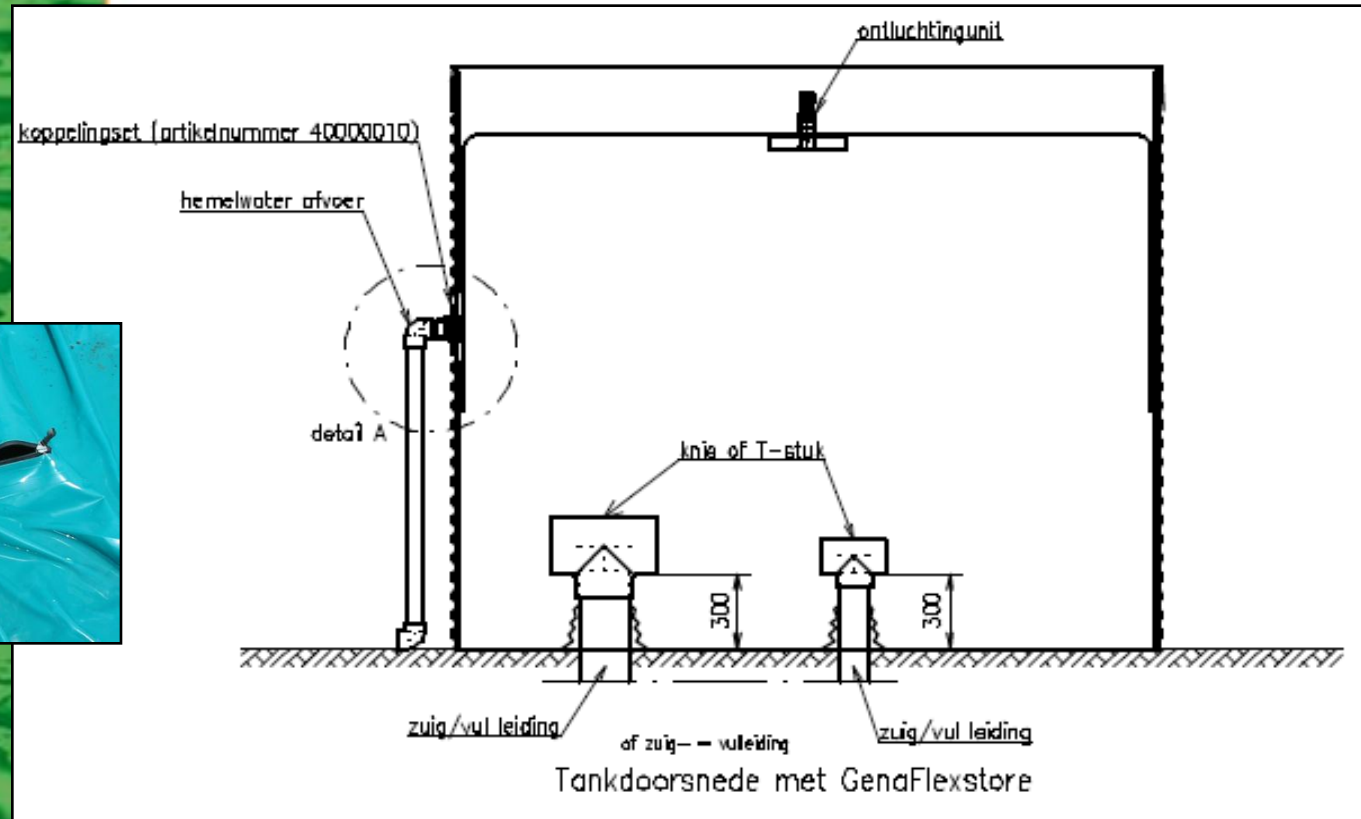
- Tank: **WSA** (thickness plates min. 1mm.)
- Liner (internal part)
PVC: bottom plus half of wall
 - *Rain water & clean water* → *Aquatex® PVC*
 - *Drain water (recirculation water)* → *Draintex®*
 - *Drinking water* → *Aquatex® PVC*

(practice: majority draintex)
- Liner (external part)
PVC **re-enforced**: cover plus top side of wall
 - *Standard: Genatex 800 Plus (green)*
 - *Drinking water: Genatex 700 drinking water (beige/white)*

Gena-Flexstore®

Details:

- water supply



Waterdichte oplossingen



- **Always** through bottom!
- Piping always bent or T-part

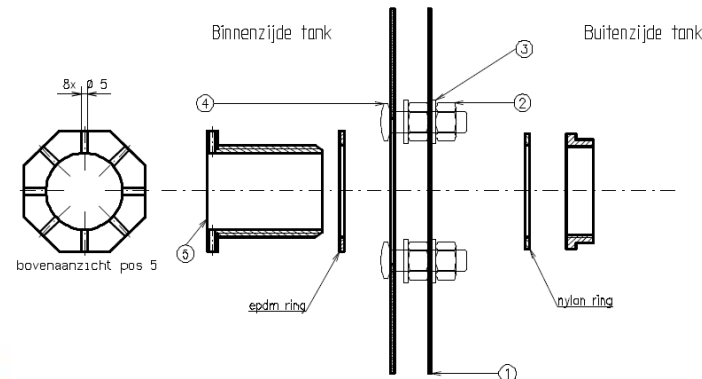
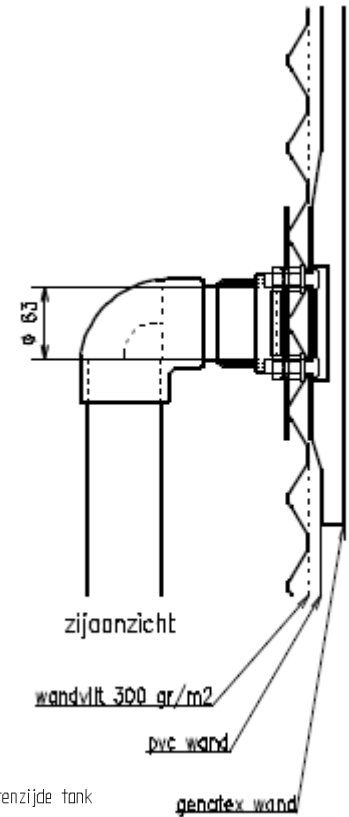
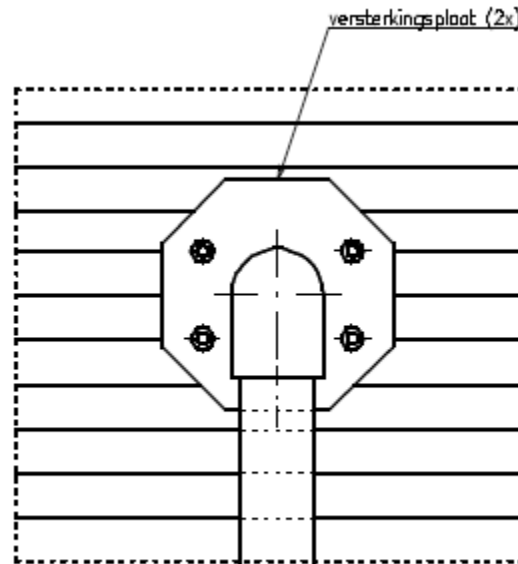
Gena-Flexstore®

Details:

- Drainage of rainwater



Waterdichte oplossingen

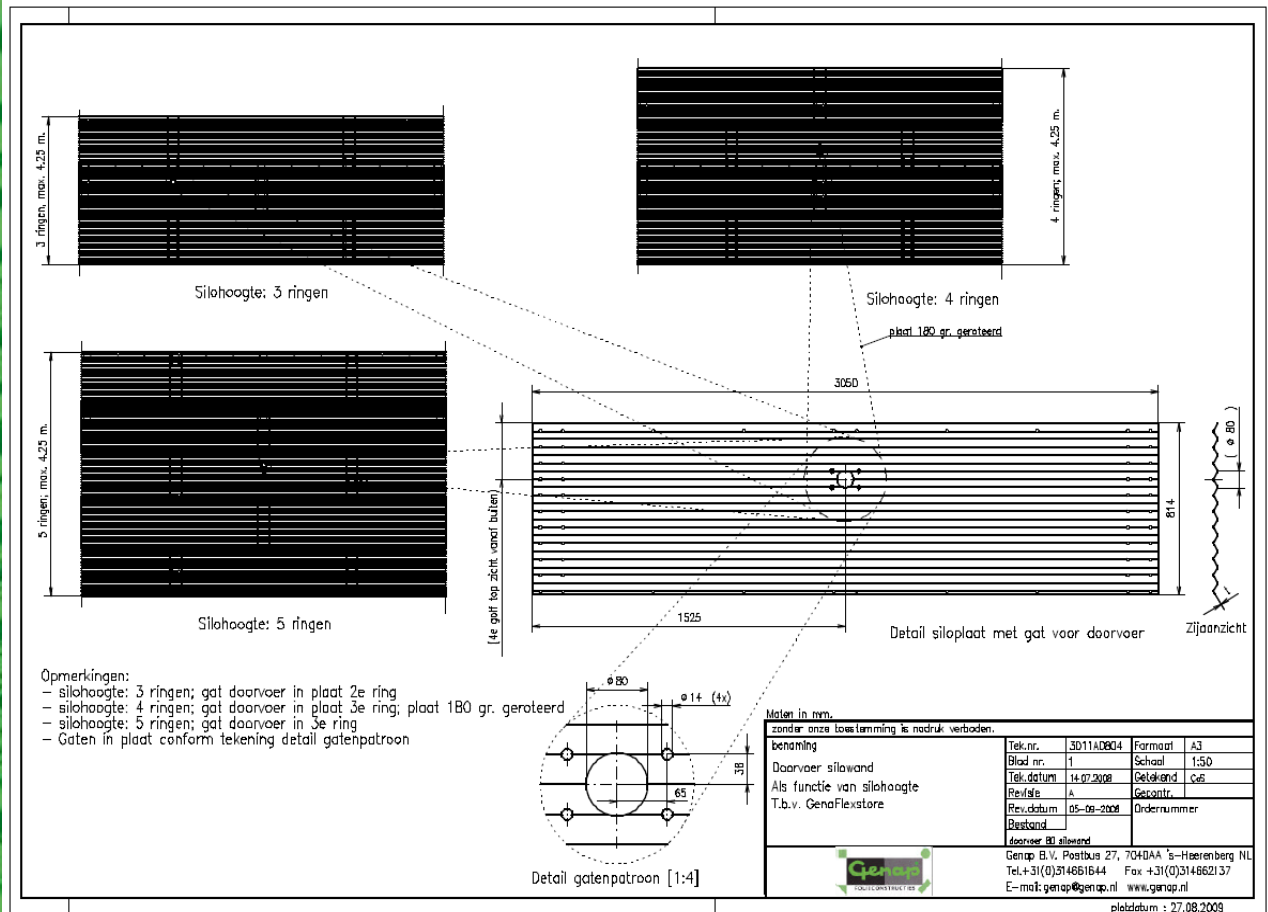


- Wall outlet \pm 20cm above $\frac{1}{2}$ tank height
- 1 wall outlet per tank
- Hole prefab in new tank / drill on location existing tank

Gena-Flexstore®

Details:

- Drainage rainwater



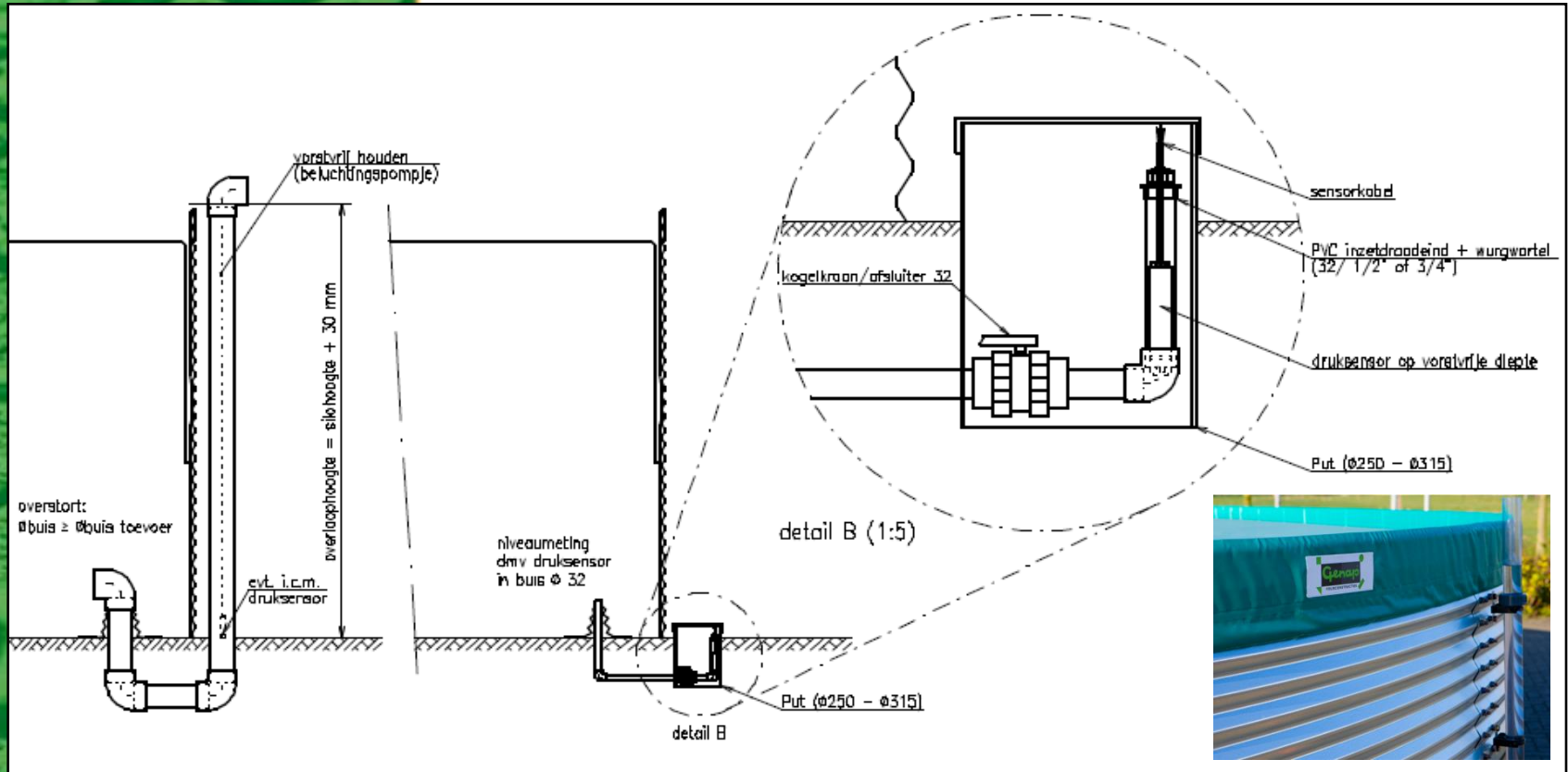
Waterdichte oplossingen



Genap-Flexstore®

Details:

- Over-fill and pressure protection

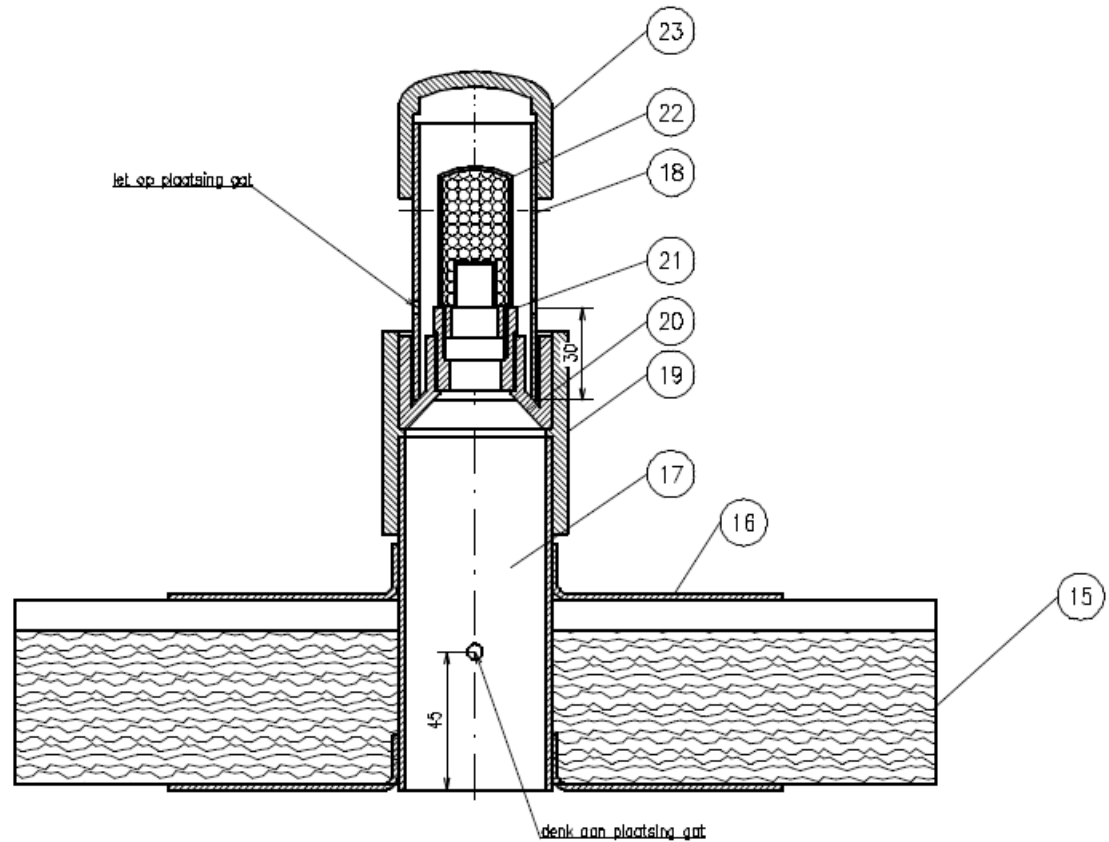
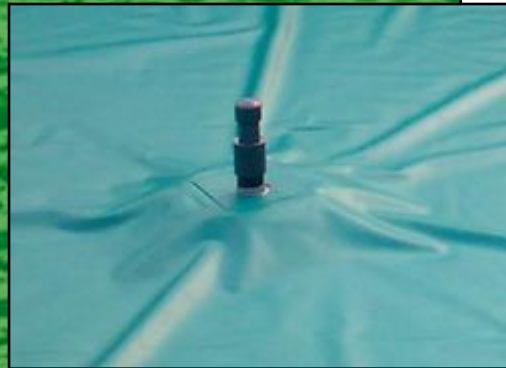


Waterdichte oplossingen

Gena-Flexstore®

Details:

- Ventilation unit



Waterdichte oplossingen

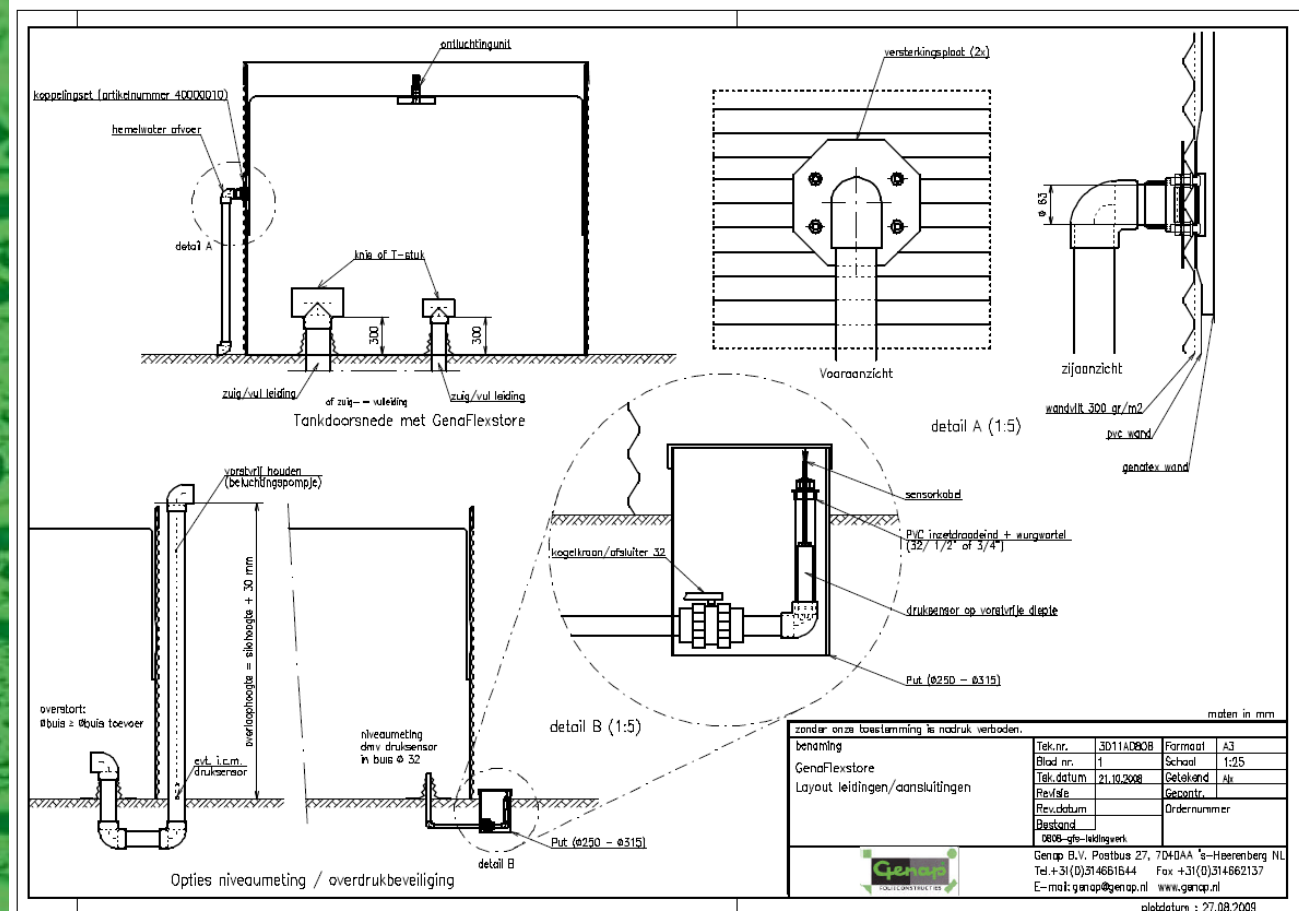


- Located central in cover
- Prefab mounted
- Maintenance free

Gena-Flexstore®

Details:

- Overview drawing



Waterdichte oplossingen



Gena- Flexstore®

Waterdichte oplossingen

Installation:

- Building tank / check existing tank
- Install bottom and wall protection
- Install GenaFlexstore® = install liner (~ PVC 1.0mm)
- Install conical outlets (through zipper)
- Install wall outlet for rainwater
- *Genap supplies:*
 - *complete liner*
 - *bottom and wall protection*
 - *wall outlet for rainwater*
 - *tank (option)*



Gena- Flexstore®

Waterdichte oplossingen

Installation:

- *Not included:*
 - **pipng** and **hardware** for over fill and pressure protection like pressure sensor and level switch
- Remark:
Way of protection is choice of customer, important that this is managed or that user is aware or involded risk of blowing up liner!!



Gena- Flexstore®

Waterdichte oplossingen

Others:

Which information is needed by placing an order for a GenaFlexstore®

- 1. Existing or new tank*
- 2. Brand of tank: Buwatec or other*
- 3. Is tank for Benelux or Export
(important for maximum tank height)*
- 4. Diameter and height of tank*
- 5. What kind of water will be stored*
- 6. Details of outlets (diameter, location)
(use special form for this!)*
- 7. How will over fill and pressure protection
be arranged?*

Gena- Flexstore®

Waterdichte oplossingen

Others:

Which information is important for installation of GenaFlexstore® in existing tank?

1. General state of tank.
2. Most tanks are not made of 1mm thick plates.
3. Piping needs often adjustments.
4. Never re-use old protection sheets.

Gena- Flexstore®

Waterdichte oplossingen

Others:

General use and maintenance instructions:

1. Waterlevel should be always above the in- and outlets or at least 30cm.
2. By icing in our upon the system never take out or put water in the tank.
3. Inspect the system regular, especially after heavy wind or storm. Damage should always be repaired by experienced people.

Gena- Flexstore®

Waterdichte oplossingen

Others:

Available instructions:

- Installations instructions (NL/DU/EN)
- Outlet form

Points of attention:

- Water entry only through bottom
- Over-fill and pressure protection
- Wall outlet for rainwater
- GenaFlexstore® is patented
- Questions or remarks?

Thanks for your attention!!!

Gena- Flexstore®

SiloFloat

New floating cover

Benefits:

- Completely furnished
- Easy and fast to install
- Suitable for all types of tanks
- No algae growth
- Low maintenance
- Very high buoyancy
- High UV resistance
- Reduced evaporation

Waterdichte oplossingen

Gena- Flexstore®

Waterdichte oplossingen

Tension cover

Improvement of installation equipment of our tension cover. No longer with cord and hooks, but with elastics and hooks.

Benefit:

- Easier and quicker to install
- Easier to open on one side only for maintenance

